

Using social media to stimulate interest in research

Aron Downie

- Lecturer in Dept. Chiropractic (1yr)

- Recent M.Phil

- Academic interests:

- Psychomotor learning and feedback methods

- Clinical course (how we recover from back pain)

- Curriculum design and Research skills development

- Previously:

- Graduated M.Chiro 1994 @MQ

- Sessional academic 10 years

- F/T clinical practice Wollongong

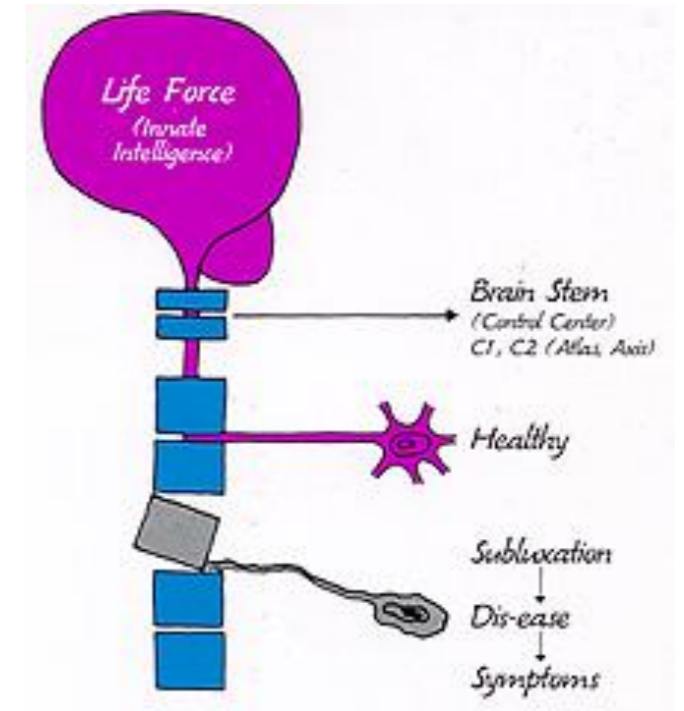




MACQUARIE
UNIVERSITY
FACULTY OF SCIENCE

Background

Chiropractic: historical context



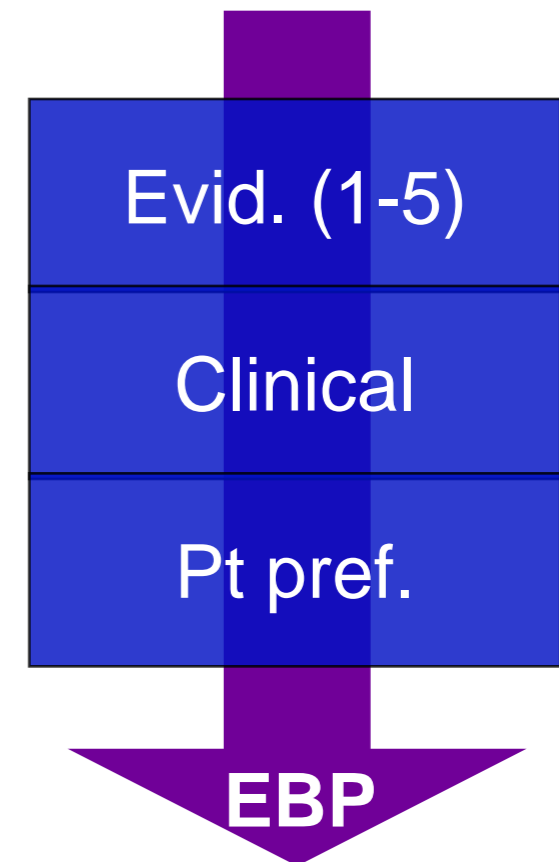
- DD Palmer was a vitalist who considered intelligent energy to be conveying information among various body parts
- All disease comes from nerve interference in the spine.
= **Subluxation**

Best practice healthcare: **Current reality**

- ✓ is evidence *informed* (EBP)
- ✓ works within the biopsychosocial framework
- ✓ encourages active-self care
- ✓ embraces clinical uncertainty
- ⊙ Is not based on ideas of mystical energy flow
- ⊙ Does not have one cause, one cure
- ⊙ Is not simplistic

Chiropractic: moving forward

- Evidence Based Practice (EBP)
 - Evidence *informed* practice
- Three components:
 - Evidence derived from research
 - clinical expertise
 - patient preferences
- When integrated into clinical practice, blend to offer patients higher quality chiropractic care.



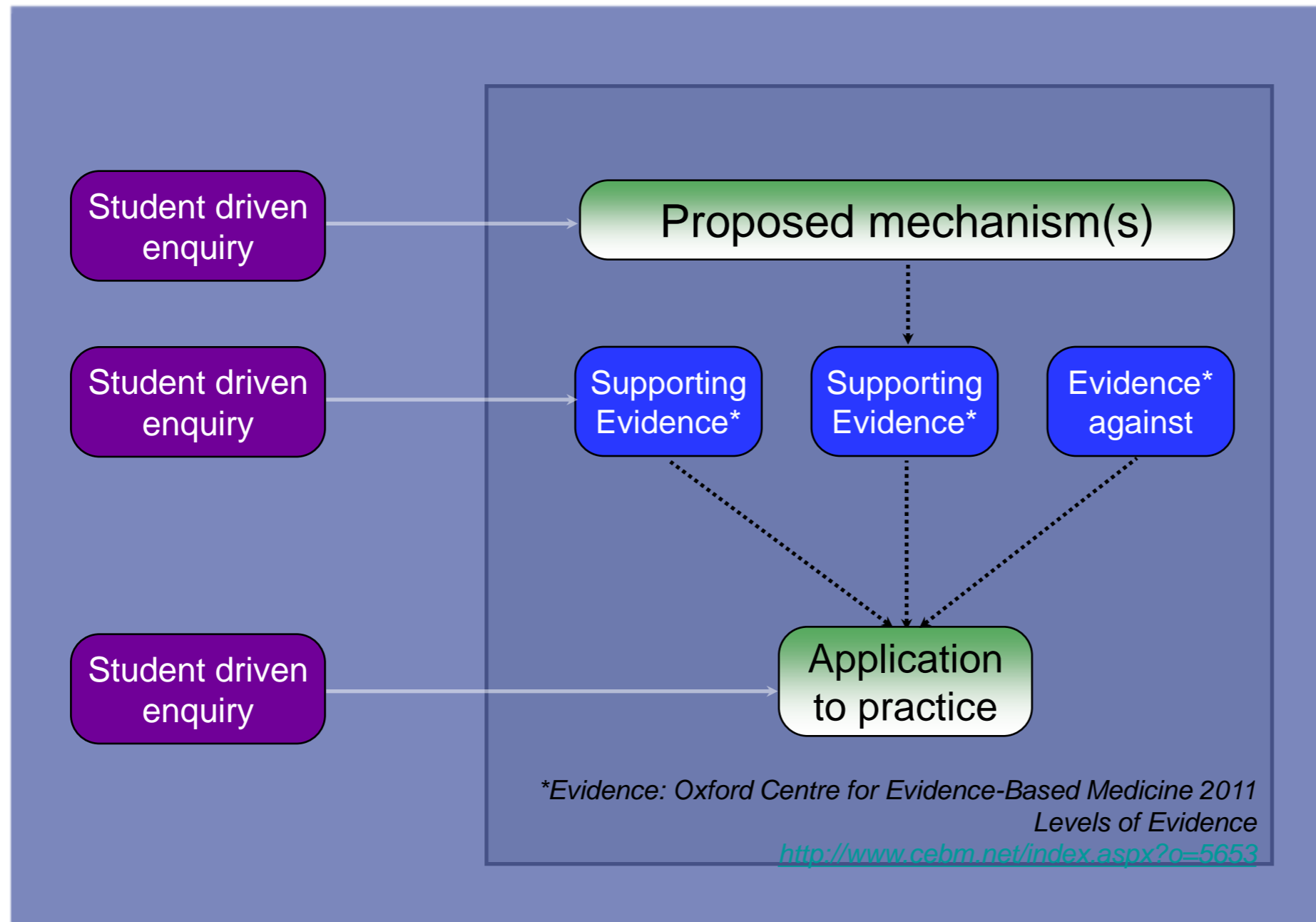
Sackett, D. L., Rosenberg, W., Gray, J. A., Haynes, R. B., & Richardson, W. S. (1996). Evidence based medicine: what it is and what it isn't. *Bmj*, 312(7023), 71.

HANELINE, M. (2011). A Primer on Evidence-Based Practice for Chiropractors. *Chiropractic Journal of Australia*, 41(3), 78–80.

Research skills development (RSD)

- Departmental guidelines for implementation
 - RSD is foundational to the implementation of EBP.
 - RSD needs to be “whole of program”
- Strategies
 - Lead by example (research informed teaching)
 - Integrate latest research into ALL delivered and assessable material
 - Deliver in a consistent way using common slides...

Presenter framework (*example*)




How do we engage students in this process?



Everything was progressing so well until we expected students to engage in this way!

Research skills development (RSD)

- Engaging students in research critique
 - Encourage discussion beyond the assessable task
 - Journal club (formal and informal)
 - Unit forums (iLearn)
 - Social media
- 



Creating a virtual community of enquiry

CHIR301: Blackboard forum 2011

Re: #3: What does the word "Philosophy" mean to you with regard to Chiropractic? ▾

└ Re: #3: What does the word "Philosophy" mean to you with regard to Chiropractic? ▾

└ Re: #3: What does the word "Philosophy" mean to you with regard to Chiropractic? ▾

└ Re: #3: What does the word "Philosophy" mean to you with regard to Chiropractic? ▾

└ Re: #3: What does the word "Philosophy" mean to you with regard to Chiropractic? ▾

└ Re: #3: What does the word "Philosophy" mean to you with regard to Chiropractic? ▾

└ Re: #3: What does the word "Philosophy" mean to you with regard to Chiropractic? ▾

└ Re: #3: What does the word "Philosophy" mean to you with regard to Chiropractic? ▾

└ Re: #3: What does the word "Philosophy" mean to you with regard to Chiropractic? ▾

- 3 weeks
- 165 responses
- ~60% of class



eG (Macquarie Chiropractic Evidence Growth) 

- About
- Events
- Photos
- Files
-  Notifications
- 
- 

Facebook group eG: evidence growth



eG

Began: 9/11/12
Members: 789

Purpose: A forum to stimulate debate on research related to evidence based chiropractic - mechanisms, application and efficacy



Daniel Saitta

← 3rd yr U/G

Found this interesting piece of literature which, if my understanding is correct observes the illiciation of the fear response in an animal model via direct stimulation of neurons in the dentate gyrus which are active during the primary fear response, providing some insight into enigmatic concept of memory. Although not directly related to chiropractic I thought the method was quite novel, which again correct me if I'm wrong, could be adapted to provide a greater comprehension of the function of other areas of the brain. <http://www.nature.com.simsrad.net.ocs.mq.edu.au/nature/journal/vnfv/ncurrent/full/nature11028.html>

<http://www.nature.com.simsrad.net.ocs.mq.edu.au/nature/journal/vnfv/ncurrent/full/nature11028.html>
simsrad.net.ocs.mq.edu.au

Like · Comment · Follow Post · Share · March 24 at 9:32pm

Ryan Hislop likes this.

View all 8 comments



Stephney Whillier Also forgot to mention the vestibular parieto-occipito-temporal area (a diffuse area around the operculum and insula) which processes proprioceptive, visual and vestibular information and gives us a perception of our body orientaion in space
March 25 at 5:39pm · Like

← Academic



Danielle Gregory if you want to, simply as an exercise, think about how chiropractic may influence these areas, just get out a pen and draw the structure. Then draw the receptors that exist in the ... See More
March 27 at 11:22am · Like · 1

← Recent PhD



eG

Began: 9/11/12
Members: 789

Purpose: A forum to stimulate debate on research related to evidence based chiropractic - mechanisms, application and efficacy

eG (Macquarie Chiropractic Evidence Growth) About Events Photos Files Notifications

Write Post Add Photo / Video Ask Question Upload File 789 members (4 new)

Write something... + Add People to Group

Adam Wild
could the prognosis of acute LBP been underestimated?
http://journals.lww.com/spinejournal/Abstract/2012/04150/The_Prognosis_of_Acute_Low_Back_Pain_in_Primary.9.aspx

← Recent graduate

The Prognosis of Acute Low Back Pain in Primary Care in the... : Spine
journals.lww.com
Study Design. Prospective cohort study. Objective. To assess the prognosis of patients presenting with

Like · Comment · Unfollow Post · Share · Yesterday at 10:05am

Michael Kaspar likes this.

← Recent graduate

View all 6 comments

Jørgen Jevne Excellent find. Thanks a lot.
15 hours ago · Like

← Odense school Medicine

Aron Downie Here is a similar (high quality) paper with a different take on recovery. Measurement criteria may well be the key. This is a meta-analysis.
<http://www.ncbi.nlm.nih.gov/pubmed/22586331>

The prognosis of acute and persistent low-back pain: a ... [CMAJ. 2012] - PubMed - NCBI
www.ncbi.nlm.nih.gov
PubMed comprises more than 22 million citations for biomedical literature from M...
See More

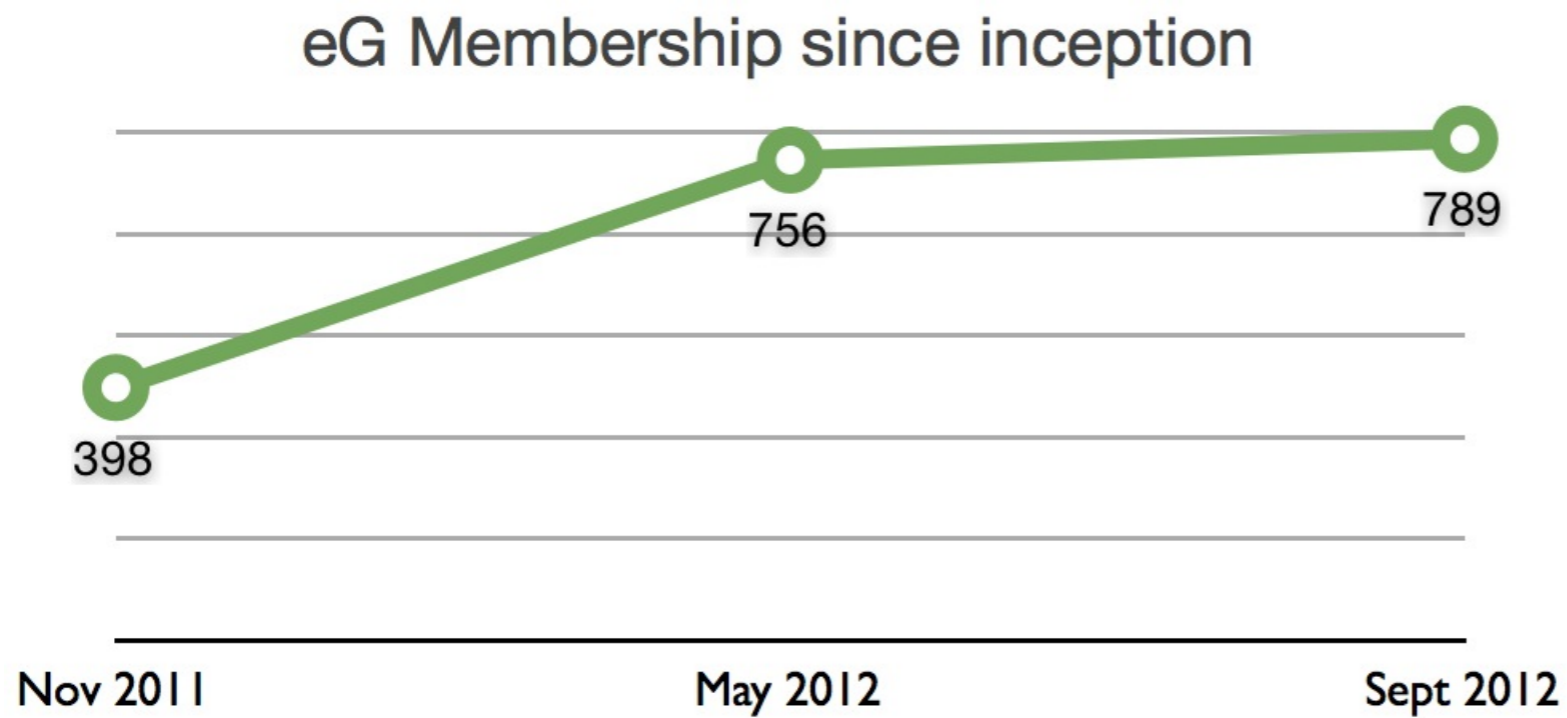
← Me

42 minutes ago · Like · Remove Preview

Write a comment...



Membership trend





eG: goals

- To create a community where research is the “glue” for interaction (Maslow: Level 3)
- To highlight the need for research in Chiropractic *beyond course content*
- To stimulate new research questions
- To help students become comfortable with “clinical uncertainty” etc.
- To become comfortable with academic critique (Maslow: Level 4)



eG: unexpected benefits

- An alumni style community created
- Exposé of logical fallacies:
 - *“this RCT doesn’t apply, therefore we can ignore all RCT’s”*
- Highlighting of cherry picking/research bias:
 - *“this research proves my point”*
- Boosting confidence to argue with peers (expected):
 - *Lively discussion in lectures (unexpected)*
- **Has facilitated a dynamic curriculum**



eG: Moderator interaction

- **Six posts removed**
 - Personal critique / off topic / rude
- **Two members banned**
 - Spammers

***** Moderator Announcement *** (2)** This post is a reminder for those unclear with the basic purpose of eG. The forum exists to stimulate debate on research related to EBC/EBP/EBH/EBM. This forum is largely self-moderated by common sense, common purpose and cordial behaviour. However, there are some conditions that MAY trigger a post deletion. These are: 1. Posting contrary to the core purpose of eG. 2. Advertising WITHOUT the clear purpose of disseminating knowledge, or increasing the research culture within chiropractic. 3. Critique on a personal (non-academic) level that may be offensive to the general audience of the eG group. 4. Posting forceful (unsupported) opinion, AND refusal to consider critique in line with academic rigor regarding that opinion. (These are NOT AUTOMATIC TRIGGERS for post deletion) Thank you for your continued support in eG. It is exciting to see quality debate and evidence discussion related to our profession.



eG: Limitations

- Facebook is NOT a research database
 - Search is rudimentary at best
 - No full text repository
- Tracking usage
 - Who is contributing?
 - Who is watching?
- Need more U/G posters
- Need more academic posters



eG: Future

- Mature group
 - Membership is stable
 - Daily posts
 - Self-regulating
- Encourage more staff to post
- Give assessable tasks relating to eG?

Thank you

Aron Downie