



# Macquarie University Clinical Trial Unit

CLINICAL TRIAL START UP OF SPONSORED TRIALS





## TABLE OF CONTENTS

Macquarie University Clinical Trial Unit .....	1
Clinical Trial Start up of sponsored trials .....	1
Our team and facilities .....	3
the mq ctu team .....	3
MQ CTU facilities.....	3
Investigational Product management .....	4
Imaging.....	4
Confidentiality Agreements (CDAs) .....	4
The MQ CTU Feasibility Process .....	5
What happens when you send us a prAE/SAEotocol to review? .....	5
Site selection visits.....	5
The Macquarie University Ethics process .....	5
MQ HREC submissions .....	5
Documents required for the MQ HREC submission .....	6
HREC submission timelines .....	7
MQ Research Governance.....	7
Indemnity, CTN, Budget, Contracts and Finance.....	7
Indemnity details .....	7
CTN details.....	8
Negotiating a budget with the CTU .....	9
Clinical Trial Research Agreement .....	11
CTU finance and billing.....	13
CTU Documentation.....	13
Electronic medical records (eMR) .....	13
Electronic investigator site files (ISF) .....	14
Clinical trial archiving .....	14
Appendix 1 – CTU organogram .....	15
Appendix 2 – CTU fixed costs.....	16
Appendix 3 - MUH Pharmacy Clinical Trial costs .....	20

# Clinical Trial start up at MQ

Clinical Trials is what we do so that our patients have access to state of the art treatments. We are delighted you have chosen the Macquarie University Clinical Trial Unit (MQ CTU) to work with on your clinical trial and we look forward to collaborating with you. This guide is intended to facilitate and expedite the start up process. If you have any questions regarding start up, please do not hesitate to reach out to our start up manager, Cathie Chester (catherine.chester@mq.edu.au).

## OUR TEAM AND FACILITIES

### THE MQ CTU TEAM

Our portfolio includes phase I to phase IV trials and a wide range of therapeutic areas particularly oncology, cardiovascular, respiratory, ophthalmology, endocrine, gastrointestinal, neurology, surgical drug & medical devices and radiological interventions. The PIs that work with the CTU are chosen because they see patients with the condition outlined in the inclusion criteria of the protocol and because they have clinical trial experience. The CTU supports the conduct of the trial with clinical trial coordinators, clinical trials assistants, a quality team, clinical trial trainees and start up and finance associates. A CTU organogram is provided in Appendix 1.

### MQ CTU FACILITIES

The trials at Macquarie University CTU draw on the world class facilities at the Macquarie University Hospital and the clinical expertise within the Faculty of Medicine, Health and Human Sciences. Our CTU offices are located on Level 3 at 75 Talavera Road, Macquarie University next door to the Macquarie University Hospital (3 Technology Place Macquarie University). We use clinic space for seeing trial patients at 2 or 3 Technology Place, Macquarie University. Bloods are processed and stored in a clinical trial dedicated section of specialised PC-2 labs at 2 Technology Place. The infusion suite, imaging and pharmacy services are provided onsite in the hospital.

Most of our PIs use electronic medical records and we have an electronic investigator site file (ISF) system that facilitates remote monitoring. We also have a dedicated monitoring space to accommodate on site monitoring and can accommodate a maximum of 6 monitors a day.

# Clinical Trial start up at MQ

## INVESTIGATIONAL PRODUCT MANAGEMENT

We contract all our investigational product management to Pharmacy Macquarie University Hospital. Please include the pharmacy team when you set up site selection or site initiation visits:

Pharmacy Macquarie University Hospital

3 Technology Place, Macquarie University NSW 2109

Tel: +61 2 9812 3914

Email: [trialsonc.pharmacy@mqhealth.org.au](mailto:trialsonc.pharmacy@mqhealth.org.au)

If the IP is for IV infusion, SC injection and is cytotoxic, it needs to be compounded at Baxter. When Baxter is involved, Pharmacy will inform the sponsor and Email the Baxter Startup pack to Sponsor. The pack has all the information on making the SIV appointment and monitoring visits.

## IMAGING

Imaging including management of uploading scans and reports to sponsor databases is managed by the Macquarie Medical Imaging (MMI).

Ground Floor, 3 Technology Place, Macquarie University, NSW 2109

Tel: +61 2 9430 1100

Email: [mmi.research@mqhealth.org.au](mailto:mmi.research@mqhealth.org.au)

If there are particular protocol requirements regarding imaging, the MMI team needs to be included in initiation visits and training. Contact Margery Pardey using the email above.

## CONFIDENTIALITY AGREEMENTS (CDAS)

In order to expedite review of protocols for feasibilities our Principal Investigators will sign Investigator CDAs. To further facilitate the trial feasibility process, especially if we are likely to have multiple protocols to review, the Macquarie University Research Office can sign an umbrella institutional CDA. If the CDA is a pre-approved MQ template the turnaround time can be as little as a day or two. If the CDA has to go to legal review it can take 4 to 8 weeks.

# Clinical Trial start up at MQ

## THE MQ CTU FEASIBILITY PROCESS

### WHAT HAPPENS WHEN YOU SEND US A PROTOCOL TO REVIEW?

Protocols received by the CTU are allocated by the start up team to potential Principal Investigators to review and consider. The PI reviews the protocol with the CTU managers to estimate the number of participants that would be feasible; the resources we would need and the expected start up times are considered in light of our current trials. Oncology trials are further reviewed at fortnightly oncology clinical trial meetings.

We welcome feedback. Whether we are selected or not, please let us know if the study will be proceeding at Macquarie University. We try to limit competing studies and are balancing studies to ensure treatment options for many patient groups.

### SITE SELECTION VISITS

We conduct site selection visits in person, by Zoom/MS Teams and by phone. The PI and one of the Clinical Trial Managers usually attend those meetings. The Clinical Trial Pharmacist is usually able to accommodate a separate meeting on the same day. A virtual tour of our facilities is preferred to in person tours where possible (<https://www.youtube.com/watch?v=8OFakdfyjyA>).

## THE MACQUARIE UNIVERSITY ETHICS PROCESS

All trials conducted through the MQ CTU must have Ethics approval from the Macquarie University Human Research Ethics Committee. MQ CTU does not offer 'lead site' as MQ HREC is outside of mutual acceptance schemes.

### MQ HREC SUBMISSIONS

The MQ CTU start up and regulatory team ([ethics.ctu@mq.edu.au](mailto:ethics.ctu@mq.edu.au)) will make the submission to the MQ HREC through their Infonetica (FORA) submission system.

# Clinical Trial start up at MQ

## DOCUMENTS REQUIRED FOR THE MQ HREC SUBMISSION

In order to facilitate the HREC submission a complete package of the following documents needs to be supplied:

- The final clinical trial protocol
- Study medication Investigator Brochure, product information or instructions for use
- A site specific patient information and consent form consistent with the NHMRC template (<https://www.nhmrc.gov.au/research-policy/ethics/ethical-issues-and-resources>)
- Any additional information that will be provided to trial participants (customised with site specific details if applicable)
- NHMRC HREA form (<https://hrea.gov.au/>)
- Participant study summary
- A list of documents being submitted. Please include document version numbers.
- Another HREC approval letter for the trial if the trial is **phase I**. If MQ is the only site we will submit the study to Bellberry prior to MQ HREC. Ongoing HREC oversight will be transferred from Bellberry to MQ after the preliminary review. *Please note this is required for phase I trials only!*
- MQ Ethics Checklist (to be completed by the MQ start up and regulatory associate)
- TGA CTN/CTX form
- HREC invoice form (Emailed to you to complete – information must align with the CTRA)
- Expected date of first participant included
- Any Advertising Materials that will be used (if applicable)
- For applications involving radiation in excess of Clinical Care, a Radiation Safety report (assessed by MQ Radiation officer)
- Data Management Plan

## NOT FOR HREC SUBMISSION, REQUIRED FOR BUDGET / CTRA

- Contract:
  - Pharmaceutical clinical trials: A Medicines Australia (MA) Clinical Trial Research Agreement including a draft trial budget <https://www.medicinesaustralia.com.au/policy/clinical-trials/clinical-trial-research-agreements/>
  - Medical Device Clinical Trials: Medical Technology Association of Australia (MTAA) Clinical Investigation Research Agreement including a draft budget <https://www.mtaa.org.au/clinical-investigation-research-agreements>
- Indemnity Form – Standard (HREC indemnity only form is not required as MQ HREC is covered under the standard indemnity)
  - Pharmaceutical clinical trials: MA Standard Indemnity Form <https://www.medicinesaustralia.com.au/policy/clinical-trials/indemnity-compensation-guidelines/>
  - Medical Device Clinical Trials: MTAA Standard Indemnity Form <https://www.mtaa.org.au/clinical-investigation-research-agreements>
- Insurance certificate/ statement of insurance for \$20 million AUD



# Clinical Trial start up at MQ

## HREC SUBMISSION TIMELINES

The MQ HREC terms of reference, costs and meeting dates are provided on their website (<https://www.mq.edu.au/research/ethics-integrity-and-policies/ethics/human-ethics>). The Clinical Trial Unit endeavours to support the submission of up to 5 new trials to each HREC meeting. Notify our start up team as far in advance as possible which meeting you would like to aim for.

**Submission packages including all the documents listed above must be received by the CTU start up team no less than 3 weeks prior to the HREC submission deadline.**

## MQ RESEARCH GOVERNANCE

MQ Research Governance is overseen by the Macquarie University Faculty of Medicine, Health and Human Sciences Clinical Research Executive. Governance procedures for sponsored trials conducted by the CTU include an expedited review. The procedure and cost for Governance review is outlined on the MQ website: <https://www.mq.edu.au/about/about-the-university/our-faculties/medicine-and-health-sciences/our-research/fmhs-research-resources/clinical-research-governance>

The CTU will make an initial application to the Governance team (require protocol synopsis minimum) simultaneously to the HREC submission. The CTU will then apply for final Governance Authorisation after receiving MQ HREC approval, fully executed CTRA (including Pharmacy agreement if separate to the MU CTRA), fully executed standard indemnity and current insurance certificate. Final Governance Authorisation to commence the trial occurs within 5-10 days of the CTU application.

Site Initiation visits (SIV) may be conducted once these approvals are in place.

## INDEMNITY, CTN, BUDGET, CONTRACTS AND FINANCE

### INDEMNITY DETAILS

Macquarie University (ABN: 90 952 801 237) with its address at Balaclava Road, North Ryde, NSW, 2109, Australia (Indemnified party)

Indemnified party signatory: Professor Isak Pretorius / Deputy Vice Chancellor, Research

# Clinical Trial start up at MQ

Information for Sponsors

1 June 2024

## CTN DETAILS

<b>Site Details</b>	
Site Name	Macquarie University
Site Physical Location	Balaclava Road, North Ryde NSW 2109
Expected Trial Site Start Date	
<b>Principal Investigator Details</b>	
Name	
Contact Phone Number	0298122956 (General Number)
Contact Email	
<b>Human Research Ethics Committee (HREC) Details</b>	
HREC Name	Macquarie University HREC Medical Sciences
HREC Code	EC00448
HREC Contact Officer	Jennifer Rowland
Position	HREC Team Leader & Secretary Medical Sciences <i>(Note only, full version 'Human Research Ethics Team Leader &amp; Secretary to HREC Medical Sciences' does not fit eCTN)</i>
Contact Phone	0298504194
Contact Email	<a href="mailto:ethics.secretariat@mq.edu.au">ethics.secretariat@mq.edu.au</a>
<b>Approving Authority Details</b>	
Name of Approving Authority	Macquarie University
Approving Authority Contact Officer	Isak Pretorius
Position	Deputy Vice Chancellor of Research
Contact Number*	+61-2-9850-8645
Contact Email*	<a href="mailto:rebecca.ohanessian@mq.edu.au">rebecca.ohanessian@mq.edu.au</a>

\*Please note the contact number and email are for Rebecca Ohanessian the executive assistant to the Deputy VC of Research.

Our start up and regulatory team ([contracts.ctu@mq.edu.au](mailto:contracts.ctu@mq.edu.au)) can negotiate a budget with sponsors in parallel to HREC review of a trial.



# Clinical Trial start up at MQ

## NEGOTIATING A BUDGET WITH THE CTU

We will calculate the cost of conducting your trial at Macquarie University as follows:

- We have fixed costs to cover start up, management and administration of a clinical trial (see Appendix 2).
- Protocol procedures are costed at Australian Medical Association (AMA) rates.
- Clinician time is charged in line with the AMA consultation rates and according to the type of visit and/or fees charged by the investigator. For the initial screening visit, \$680 will be charged, and \$340 for subsequent visits.
- Study coordinator time is charged at \$90 per hour. Study coordinator time includes preparation for the visit including making appointments, reviewing procedure results, arranging IP dispensing, conducting a face-to-face visit, documenting the visit and any patient interaction in between, entering data into eCRF, working with the CRA during monitoring visits, and query resolution. As a rule, a screening visit takes 8 hours.
- AE/SAE Treatment. Institution/Investigator will promptly notify <Sponsor (or the Subcontracted entity)> of any Research Injury. <Sponsor (or the Subcontracted entity)> will reimburse for all necessary costs incurred for the treatment of AEs/SAEs occurring and deemed possibly related or related by the Principal Investigator, due to participation in the study, provided the AE/SAE has been properly reported and documented. Institution will submit all invoices for AE/SAE treatment in accordance with <'name of the section in Schedule 2 that refers to invoice generation'. AE/SAE treatment expenses are reimbursed separately and may include costs associated with treatments not contemplated by the Protocol, therefore these costs should not be delineated within the agreement.
- We provide most trial participants with a \$70 gift card to cover the costs of their petrol and parking in attending each trial visit.
- Patient Travel Reimbursement (long distance) - Travel Expenses for Study Participants travelling beyond 50 km will be reimbursed at the current ATO rate per kilometre if travelling by own car, or taxi fees. Such reimbursement shall be based on actual receipts, odometer readings or information provided by the Study Participant. Such reimbursement will require prior approval from the Sponsor.
- For regional participants, approval will be sought from the sponsor to cover a participant's expenses for travel, meals, and accommodation at the onsite Mercure Hotel.

# Clinical Trial start up at MQ

- We cannot support the use of the Greenphire (or similar) systems
- Macquarie University charges 25% overhead on all clinical trials income, therefore an institutional overhead of 25% shall be applied to all costs.
- If a trial extends beyond 5 years, all fees will be increased by 10% for any procedures conducted from the 5th anniversary of the trial initiation visit.

The MUH Pharmacy (independent of Macquarie University) has fixed costs as well (Appendix 3). Budgets and contracts should be negotiated directly with the Pharmacy. If the pharmacy costs are paid to the CTU to pass onto the pharmacy, they will incur the Macquarie University 25% overhead costs. This overhead can be saved by paying the pharmacy directly. A separate CTRA can be set up between the pharmacy and the sponsor OR pharmacy can be added as a second payee on the Macquarie University CTRA.

A draft budget with a breakdown of protocol procedures and reflecting the standard costs should be supplied to the MQ CTU start up team ([contracts.ctu@mq.edu.au](mailto:contracts.ctu@mq.edu.au)) with the HREC submission package.

# Clinical Trial start up at MQ

Information for Sponsors

1 June 2024

## CLINICAL TRIAL RESEARCH AGREEMENT

The MQ CTU uses the MA CTRA or MTAA CIRA template for sponsored trials.

Once the budget is agreed upon, the sponsor customises the CTRA template. Page 1 of the template is customised as follows:

Name of Institution:	Macquarie University
Address:	Balaclava Road, North Ryde, NSW, 2109, Australia
ABN:	90 952 801 237
Contact for Notices:	Head of Clinical Operations
Email for Notices:	clinicaltrials@mq.edu.au
Fax for Notices:	+61 2 9850 5747
Phone Number:	+61 2 9812 3500/ +61 2 9812 2968 (D)

Payee details should be inserted into Schedule 2 as follows:

Name of Institution:	Macquarie University
Name of Bank	National Australia Bank (NAB)
Bank Address:	Macquarie Shopping Centre, Herring Road, North Ryde, NSW 2113
Account Name:	Macquarie University
BSB Number:	082 344
Account Number:	530802756
Swift Code:	NAT AAU 3303M
Payment Notices to:	CTU Finance team, ctu_finance@mq.edu.au

# Clinical Trial start up at MQ

Information for Sponsors

1 June 2024

If Pharmacy costs are being paid to the pharmacy directly (this is what we recommend), the following payee details should also be included in the CTRA:

Name of Institution:	MUPharm Pty Ltd trading as Macquarie University Hospital Pharmacy
ABN:	25 132 806 289
Address:	Ground Floor, Macquarie University Hospital, 3 Technology Place, Macquarie University, NSW 2109
Name of Bank	BankWest
Bank Address:	403 George Street, Sydney, NSW 2000
Account Name:	MUPharm Pty Ltd
BSB Number:	302 598
Account Number:	0007512
Swift Code:	BKWAAU6P
Payment Notices to:	accounts@mupharm.com.au

The CTRA template will be reviewed by the Start Up and Regulatory contracts person.

- If there are additions to the CTRA Schedule 7, an MQ legal team review is also required and will typically take 4 to 8 weeks. SEBS approval for the schedule 7 changes requested, should be provided prior to MQ legal review, however will not by-pass the review process. This schedule 7 review can be undertaken in parallel to budget negotiations.
- The CTU does not accept withholding payments.
- Nor do we accept Recipient Created Tax Invoices. We will track our patient visits and provide an invoice once the visit is complete and entered into the eCRF.
- If trial procedures are separate to participant visits and listed as invoiceable items in the CTRA, the sponsor should provide a quarterly listing of all invoiceable items completed.
- MQ University has payment terms of **30 days**.
- We expect payment upon completion of visit and data being entered into the CRF/EDC. We cannot support waiting for data to be monitored before payment.

# Clinical Trial start up at MQ

Once the final CTRA is reviewed and approved, electronic signatures with an auditable platform such as AdobeSign or DocuSign is preferred. Alternatively, 2 copies of the CTRA signed by the sponsor are sent to the CTU to arrange wet ink signatures.

## CTU FINANCE AND BILLING

The CTU does not accept recipient created invoices. Invoices will be generated quarterly and will reflect trial visits and procedures completed. We are also unable to accommodate withholding of part payments until the end of the study.

Our payment terms include that payment is due **within 30 days** of receipt of invoices.

## CTU DOCUMENTATION

The MQ CTU has an electronic medical records system for most therapeutic areas as well as an electronic Clinical Trial Management System (CTMS) with electronic site document storage capacity supporting the documentation of most of our clinical trials.

## ELECTRONIC MEDICAL RECORDS (EMR)

The eMR system many of our PIs use is Odyssey (<https://odysseyemr.com.au/>). Odyssey is customised for clinical trials including supporting adverse event logs and concomitant medication logs with electronic investigator sign off. We are currently rolling out direct (onsite or remote) access to Odyssey eMR to relevant third parties (eg Sponsor). Prior to granting access, third parties will be required to sign a Deed of Confidentiality and Request for eMR Access Form which details the conditions under which access is provided. Creation of the eMR account will take up to 2 weeks. Access will be provided up to 24 hours prior to and following the duration of confirmed monitoring visit/audit.

In cases where direct access is not permitted, certified printed copies will be available. Our coordinators will provide support for periodic reviews of the eMR to ensure paper records are accurate. Please note that the CTU does not have the resources available in general to support redacting source data to support remote source data verification unless in circumstances where on-site monitoring is not allowed per institution policy (e.g. COVID-19 restrictions).

# Clinical Trial start up at MQ

## **ELECTRONIC INVESTIGATOR SITE FILES (ISF)**

The Clinical Trial Management System we use is REALTIME (<https://www.realtime-ctms.com/>). All new trials at MQ CTU will have an electronic ISF. RealTime-eDOCS™ is a fully validated, Part 11 compliant, electronic document management system. The monitor portal allows monitors access to their assigned study records. All filed documents may be reviewed, tracked and downloaded as needed by the monitor. This portal is unique to each user and only reveals records specific to the user's study assignment and records can't be altered through this portal. A manual with additional information can be provided upon request. By having access during the study start up phase, sponsor start up teams will be able to download start up documents directly for their TMF etc.

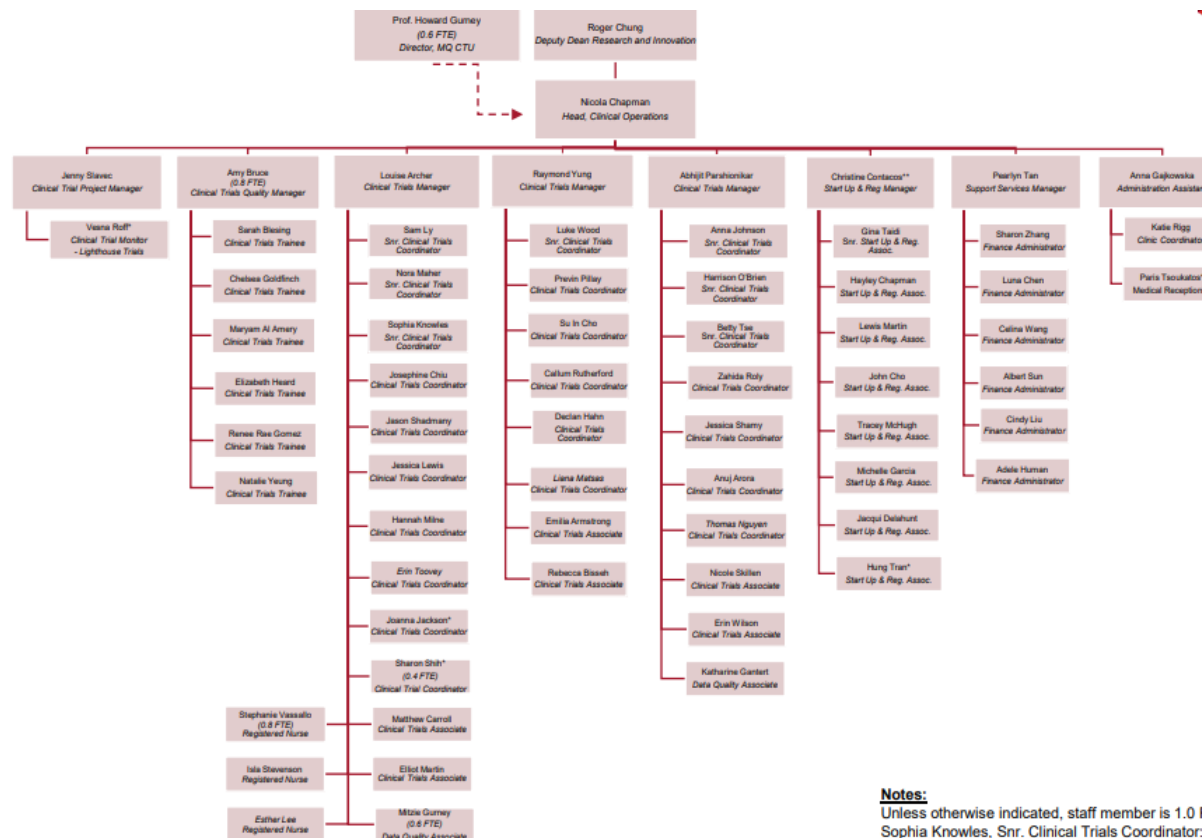
## **CLINICAL TRIAL ARCHIVING**

The electronic ISF in Real Time allows indefinite document storage. The patient paper files are archived off site at Iron Mountain. The CTU maintains an archived study file to keep track of what trials have been archived and the Iron Mountain tracking number etc for straight forward retrieval if required.



# Clinical Trial start up at MQ

## Appendix 1 – CTU organogram



**Notes:**  
 Unless otherwise indicated, staff member is 1.0 FTE  
 Sophia Knowles, Snr. Clinical Trials Coordinator: Maternity leave until ~ Feb 2024  
 Cathie Chester, Start Up & Reg Manager: Maternity leave until ~ March 2024  
 Michelle Dockary, Clinical Trials Quality Manager: Long service leave ~ May 2024  
 Ida Madsen, Clinical Trial Coordinator: Maternity leave until ~ Jan 2025  
 Shivanjali Lingam, Clinical Trial Coordinator: Maternity leave until ~ Jan 2025  
 \* Casual  
 \*\* Christine Contacos will provide maternity leave cover for Cathie Chester from 20-Feb-2023

# Clinical Trial start up at MQ

Information for Sponsors

1 June 2024

## Appendix 2 – CTU fixed costs

MACQUARIE UNIVERSITY CLINICAL TRIALS - Standard Site Fees			Site Comments
SR. NO.	ITEM DESCRIPTION	Total Incl 25% OH (AUD \$) Excl GST	
A	Institutional overhead (IO)	Applied to all costs	Macquarie University applies an Institutional overhead to all research projects at the University. The minimum Overhead and Infrastructure Costs that must be recovered on all funded research projects is <b>25%</b> .
1a	Site Start Up Fee	\$8270.00	Includes HREC processes, admin costs, teleconference/training time, and all study-related start-up activities. Applicable to all clinical trial phases.
1b	Site Start Up Fee	\$9280.00	Includes HREC processes, admin costs, teleconference/training time, and all study-related start-up activities. This increased fee is <b>only applicable to Phase 1 trials whereby MQ University CTU is required to submit to Bellberry HREC in addition to MQ University HREC.</b> Only one start up fee will be charged.
2	Radiology Set Up fee	\$1300.00	One-off fee. Review of Protocol & set up of trial specific requirements (Central upload). Collation of essential documentation establishment of files. Education/training of staff. <b>This fee is applicable to all studies with an imaging component.</b>
3	Ophthalmology Set up Fee	\$1300.00	One-off fee. Review of Protocol and Collation of essential documentation establishment of files. Education/training of staff. Receipt and storage of initial study materials. <b>This fee is applicable to all studies with an ophthalmology component.</b>
4	Respiratory Lab Set Up Fee	\$1300.00	One-off fee. Review of Protocol and Collation of essential documentation establishment of files. Education/training of staff. Receipt and storage of initial study materials. <b>This fee is applicable to all studies with a respiratory component.</b>
5	Laboratory Set up Fee	\$1300.00	One-off fee. Review of Protocol & Collation of essential documentation establishment of files. Education/training of staff. Receipt and storage of initial study materials. <b>This fee is applicable to all studies with a pathology component.</b>
5a	Quarterly Laboratory Storage Fee (from first patient screened)	\$390.00	Fee is only applicable for studies where batch processing is required. This fee accounts for the storage of samples for shipment to the central laboratory and maintenance of logs.
6	Site Close down fee	\$1950.00	Including but not limited to completion of data clearing, data lock, inventory reconciling, returning of trial provided materials/ commodities, preparing study material for archiving, monitoring close out activities, data lock for eCRF, HREC final reporting.

# Clinical Trial start up at MQ

Information for Sponsors

1 June 2024

MACQUARIE UNIVERSITY CLINICAL TRIALS - Standard Site Fees			Site Comments
SR. NO.	ITEM DESCRIPTION	Total Incl 25% OH (AUD \$) Excl GST	
7a	Quarterly Site ongoing administration fee (from Site Initiation Visit)	\$1300.00	This fee accounts for all activities and admin work undertaken by site to deliver as per study protocol. It includes but is not limited to HREC reporting, monitoring visit, query resolution, data locks, stationary costs, recovery of material/ docs from other institutes, ordering study supply, mailouts/ couriers, filing, stationary, device ongoing accountability, device storage, device courier, etc.
7b	Quarterly PI oversight fee (from Site Initiation Visit)	\$1300.00	This fee accounts for PI oversight beyond patient/clinic time. It includes but not limited to correspondence with sponsors, additional review of AEs/SAEs, data review, discussion of patients and sign-off and review of protocol amendments, annual reports, SUSARs and other HREC submitted documents.
8	HREC Amendment Fee (per occurrence)	\$650.00	Major amendments fee to be paid to CTU. This fee accounts for processing and handling of amendments submitted to MQ HREC. Amendments will be determined to be major at the discretion of the CTU. All amendments that include changes to the PICF or require multiple documents to be submitted will be classified as major. This cost is independent of the MQ HREC fee.
9	HREC Amendment Fee (per occurrence)	\$260.00	Minor amendments fee to be paid to CTU. This fee accounts for processing and handling of amendments submitted to MQ HREC. Amendments will be determined to be minor at the discretion of the CTU. This cost is independent of the MQ HREC Fee.
10	Tele-conference/	\$425/hour (investigator) \$113/hour (trial coordinator)	This fee is charged when site staff are required by Sponsor to attend a tele-conference/telephone call for medical follow up regarding medical events.
10a	Protocol training fee	\$425/event (investigator) \$113/event (trial coordinator)	Attendance to protocol training sessions mandated by Sponsor.
11	Remote Monitoring Preparation Fee	\$208/hour	<i>Applicable to studies where direct eMR access is not set up.</i> Remote monitoring visits are not encouraged at MQ Uni CTU however, this fee <b>should only be applied in extraordinary circumstances when on-site monitoring visits are not allowed per institution policy</b> (e.g. during COVID-19 lockdown). This hourly rate is charged for the time spent by the CTC to prepare for remote monitoring visits (redact source document and provision of redacted source to the Sponsor). The time will be tracked by the CTC and no more than 2 hours shall be spent preparing for each remote monitoring visit.

# Clinical Trial start up at MQ

Information for Sponsors

1 June 2024

MACQUARIE UNIVERSITY CLINICAL TRIALS - Standard Site Fees			Site Comments
SR. NO.	ITEM DESCRIPTION	Total Incl 25% OH (AUD \$) Excl GST	
12	Archiving fee	\$1456.00	One-off fee payable after approval of Final Report. Standard archiving period is <b>15 years</b> . Cost will increase if longer archival period is required. Includes pharmacy files. N/A if sponsor is Archiving.
13	Archiving retrieval fee (where applicable)	\$195.00	Fee charged by the storage company to retrieve stored documents. Charged per occasion.
14	Audit fee (if and when applicable)	\$1300.00	Accounts for time invested by site before, during, and after an audit. A maximum of 3 days is allotted. Charged per audit.
15	Radiation Assessment Fee	\$520.00	In the event radiation assessment is required for patient safety. Ethics committee requirement in NSW.
16	MQ Health Governance authorisation Assessment Fee	As invoiced by CRG	Fee is directly payable to Governance. Please refer to the MQ policy online regarding the fee (within step 2: Initial MQ Health governance endorsement) <a href="https://www.mq.edu.au/about/about-the-university/our-faculties/medicine-and-health-sciences/our-research/fmhs-research-resources/clinical-research-governance/governance-for-fully-sponsored-clinical-trials">https://www.mq.edu.au/about/about-the-university/our-faculties/medicine-and-health-sciences/our-research/fmhs-research-resources/clinical-research-governance/governance-for-fully-sponsored-clinical-trials</a>
17	MQ HREC Fees	As invoiced by HREC	Fees are applied by the Macquarie University HREC. Invoices are directly payable to Macquarie University HREC and may be generated prior to receiving HREC approval. Terms of the HREC are available on the MQ HREC website – <a href="https://www.mq.edu.au/research/our-research/research-ethics-and-integrity/human-ethics/applications-and-approvals">https://www.mq.edu.au/research/our-research/research-ethics-and-integrity/human-ethics/applications-and-approvals</a>
18	Electronic Investigator Study Files (from Site Initiation Visit)	\$1950.00 (set up) \$100/quarter (maintenance fee)	These fees cover the RealTime CTMS vendor costs used for storing ISFs. The setup fee is a one-off fee, which includes the first 2 years quarterly maintenance fee. If the study goes beyond 2 years, a \$100/quarter maintenance fee shall be applied.
19	Oncology Day Care – chair costs	\$975.00	Cost per occurrence (1 chair/1 day) of intravenous infusion(s) of study IP.
20	Administration of Sub Cutaneous intramuscular IP in clinic	\$531.25	Includes x2 Nurses to check & administer drug (SC/IM, no more than 15mins administration time) and 1 hour observation by CTC. Additional observation period will be charged at \$113 per hour if required.
21	Completion of pathology reference ranges by Site	\$506.25	This fee is incurred if the Sponsor requires Macquarie University CTU staff (i.e. Trial Coordinator) to enter pathology reference ranges into the eCRF. This applies to Douglass Hanly Moir Pathology only. Other pathology centres will incur additional fees. This fee covers 4.5 hours staff time (includes time spent entering data and responding to queries generated by DM/CRA etc).

# Clinical Trial start up at MQ

Information for Sponsors

1 June 2024

MACQUARIE UNIVERSITY CLINICAL TRIALS - Standard Site Fees			Site Comments
SR. NO.	ITEM DESCRIPTION	Total Incl 25% OH (AUD \$) Excl GST	
22	Annual SIP platform use	\$187.50	Creation of site profile and ongoing management of study staff profiles. <b>Annual Fee, charged from SIV.</b> This fee only applies for Sponsors using Shared Investigator Platform.
23	Interpreter Services (where applicable)	Per Invoice	In instances where Medicare rebate for interpreter services are unavailable, Sponsor shall reimburse the Institution for interpreter services provided to the Participants from screening and during the study. Payment shall be made upon receipt of supporting documentation (including participant number, date, visit type (screening, informed consent etc), language and duration of visit). Actual costs will be approximately \$150 per hour but are subject to variation (due to factors such as complexity, language, duration of visit, availability of interpreters, and service used).
24	SAE Reporting	\$375	Per SAE. This includes follow-up reports
25a	NSWHP set up fee (initial operational area)	\$625	Only applicable when archival tissue is required for the trial and is obtained from NSW Health Pathology
25b	NSWHP set up fee (for each additional operational area)	\$125	Only applicable when archival tissue is required for the trial and is obtained from other NSW Health Pathology sites (ie., not part of the initial operational area set-up)

# Clinical Trial start up at MQ

Information for Sponsors

1 June 2024

## Appendix 3 - MUH Pharmacy Clinical Trial costs



### MUH Pharmacy Clinical trials Schedule of Fees – Oral and Injection (excluding Phase I trials) 2024

**The fees below do not include GST and are subject to an additional MQ University 25% OH if paid to the CTU. This additional OH can be avoided by negotiating a direct agreement with the MUH Pharmacy or including MUH Pharmacy in the CTU contract as 2<sup>nd</sup> payee**

**Fees will increase annually by 3.5% rounded to whole dollar (5 or 10) and applied from the initiation date.**

<p><b>Establishment (Initial)</b> – Does not include 1<sup>st</sup> year administration fee This is independent of participant accrual and includes all administrative procedures associated with setting up the trial. This may be charged even if trial is ceased before SIV, to cover for services utilised.</p> <ul style="list-style-type: none"> <li>• Protocol familiarization, including attendance at relevant meetings eg SIV, pre-site visits</li> <li>• Liaising with sponsors and trial coordinators &amp; monitors</li> <li>• Education of staff</li> <li>• Initial stock management and handling</li> <li>• Completion of trial monitoring and documentations, accountabilities etc.</li> </ul>	\$2300 (one off)
<p><b>Establishment Fee (Amendments)</b> Applicable to protocol amendments that include an amendment to the drug protocol. (For additional drug/s, cohorts, etc)</p>	\$1500 /occasion
<p><b>Annual Administration</b> – Charged from trial start up SIV or first shipment arrival (whichever occurs first). This fee is fixed for the first year and will be prorated for any partial years thereafter. This includes all procedures associated with the ongoing administration of the trials.</p> <ul style="list-style-type: none"> <li>• Management and handling of shipments and receiving/recording stock.</li> <li>• Ongoing liaison with investigators, trial coordinators and monitors.</li> <li>• Managing documentation, review amendments where no change in the pharmacy process is required.</li> <li>• Handling of patient returned investigational product.</li> <li>• Monitoring visits: Booking visit and making available materials for visit and query resolution.</li> <li>• Updating Standard Operating Procedures</li> <li>• Email correspondence.</li> <li>• Managing financial aspects of trial.</li> </ul>	\$2300 /year
<p><b>Completion</b> – Payable following the close our visit.</p> <ul style="list-style-type: none"> <li>• Completion of drug accountability logs / IWRS drug accountability final reconciliation</li> <li>• Archiving of records</li> <li>• Final monitoring meetings</li> </ul>	\$600
<b>Dispensing</b>	
IMP dispensing (simple)	\$100 /first kit/item/ /patient/visit/strength
IMP dispensing (complex) A dispensing episode which requires additional time when compared to a simple dispensing. This may include but is not limited to:	\$130 /first kit/item/ /patient/visit/strength



# Clinical Trial start up at MQ

Information for Sponsors

1 June 2024

<ul style="list-style-type: none"> <li>• Additional tasks are required such as using both trial logs and narcotic registers</li> <li>• A trial where pharmacy conducts additional IWRS transaction such as logging data for the randomisation, kit verification or other steps during or after the dispensing process</li> <li>• Study specific requirements e.g. double handling/signing of all logs and prescriptions</li> </ul>	
Additional recordable drug	\$30 /subsequent kit on the same visit
Aseptic reconstitution (simple)	\$260 /preparation (up to 3 vials)
Aseptic reconstitution (complex) <ul style="list-style-type: none"> <li>• Multiple manipulations/additional product handling</li> <li>• Compounding time <math>\geq</math> 20 minutes</li> <li>• IMP with short shelf life (<math>\leq</math>12 hours)</li> <li>• Special requirements</li> </ul>	\$330 /preparation (up to 3 vials)
Additional Aseptic reconstitution	\$65 /each additional vial (>3vials/ preparation, additional charge)
<b>Call back</b> (M-F before 8am&after 4:30pm, Weekends, Public Holidays)	\$600 for IP dispensing  \$1500 for aseptic preparation
<b>Storage*</b> Payable at 12-month intervals from arrival of Investigational Product at the Institution. This fee is fixed for the first year and will be prorated for any partial years thereafter. *For bulky trials taking up a large amount of space, this may need to be negotiated at commercial rates. Note: Current commercial rates are \$200 per month for 0.21m <sup>2</sup> + retrieval fees.	
Room temperature	\$975 /year
Refrigerator/freezer (-20 degree Celsius) storage	\$1100 /year
Freezer (-80 degree Celsius) storage	\$1400 /year
Cytotoxic storage (room or fridge)	\$1100 /year
<b>Destruction/Reconciliation</b> For used/unused IMPs or any retained packaging destroyed on-site.	\$160 /occasion
<b>Administrative fee incurred for the return of IMP</b> When pharmacists need to organise the courier and process paperwork on behalf of the CRA	\$160 /occasion
<b>Destruction of Shipping containers</b> For on-site destruction of shipping containers left behind	\$35 /occasion
<b>Storage of returned Stock</b> (kept for periods beyond 3 months) When patient returns are kept for periods beyond 3 months awaiting a monitor's visit or for a shorter period where the trial packaging takes up a large amount of space and the returns process requires pharmacy involvement.	\$350 /year
<b>Pharmacist training</b> For undertaking IMP-specific training due to protocol/pharmacy manual amendment	\$160 / occasion
<b>Remote Monitoring</b>	\$200 /hour

# Clinical Trial start up at MQ

Information for Sponsors

1 June 2024

To cover the time that pharmacist is engaged to the remote call and pre and post monitoring tasks including scanning the paperwork and sending electronic documents to CRA	
<b>Relabelling</b> When pharmacists need to re-label the IMPs with new sponsor-provided labels (e.g. with updated retest date or other changes)	\$160 / hour (minimum \$160)
<b>Miscellaneous Pharmacy Services</b> For undertaking any additional activities not described in pharmacy manual requested by the sponsor	\$160 / hour
<b>Drug costs</b> 20% handling fee for any drugs required to be bought by the pharmacy for the study. Patients should not be out of pocket for their participation in clinical trials. Where a trial involves using drugs reimbursed under the PBS the sponsor will be required to pay the co-payment which is current for that year and this will increase as dictated by the PBS each calendar year.	
<b>Drug transfers</b> Includes but not limited to: <ul style="list-style-type: none"> <li>• Transfer of study drug/shipment to external compounding facility via external courier vendor</li> <li>• Transfer of study drug to another site (at discretion of PI and/or sponsor)</li> <li>• Direct to patient transfers</li> </ul>	\$100 handling fee /event plus transport costs*  *Commercial rates apply

*Macquarie University hospital Pharmacy can bill the pharmaceutical company directly for the fees and charges associated with establishing and managing clinical trials.*

*Additional fees may apply to clinical trials that require complex compounding or extra administration. This pricing will be advised at the trial setup as it will depend on the complexity of compounding/administration.*

*Invoicing for trials is automated from the pharmacy accounts system. **No third-party account systems**, such as Greenphire, **can be utilised for billing**. Invoices will be generated monthly or quarterly and emailed to the appropriate email address for payment.*

*The pharmacy fees are adopted from “Determination of standard costs associated with conducting clinical trails in Australia: Standard List of Clinical Trial Items”, which was released by independent Hospital Pricing Authority in June 2015 under subsection 131(1) of the National Health Reform Act 2011 (Commonwealth). The development of the standard costs was funded by Department of Health and revised by the National Health and Medical Research Council (NHMRC). The costs were based on principles of cost-recovery of services provided by clinical trials pharmacy staff. The costs in June 2015 determination relate to the 2014-15 financial year. The annual EBA and CPI adjustments and benchmarking have been applied since.*

*If a clinical trial continues beyond the period of 2 years, fees may need to be re-negotiated.*

# Clinical Trial start up at MQ

Information for Sponsors

1 June 2024

## MUH Pharmacy Clinical trials Schedule of Fees – Phase 1 Trials

*The fees below do not include GST*

*Fees will increase annually by 3.5% rounded to whole dollar (5 or 10) and applied from the initiation date.*

<p><b>Establishment (Initial)</b> – Does not include 1<sup>st</sup> year administration fee This is independent of participant accrual and includes all administrative procedures associated with setting up the trial.</p> <ul style="list-style-type: none"> <li>• Protocol familiarization, including attendance at relevant meetings eg SIV, pre-site visits</li> <li>• Liaising with sponsors and trial coordinators &amp; monitors</li> <li>• Education of staff</li> <li>• Initial stock management and handling</li> <li>• Completion of trial monitoring and documentations, accountabilities etc.</li> </ul>	<p>\$3000 (one off)</p>
<p><b>Establishment Fee (Amendments)</b> Applicable to protocol amendments that include an amendment to the drug protocol. (For additional drug/s, cohorts, etc)</p>	<p>\$1500 /occasion</p>
<p><b>Annual Administration</b> – Charged from trial start up SIV or first shipment arrival (whichever occurs first). This fee is fixed for the first year and will be prorated for any partial years thereafter. This includes all procedures associated with the ongoing administration of the trials.</p> <ul style="list-style-type: none"> <li>• Management and handling of shipments and receiving/recording stock.</li> <li>• Ongoing liaison with investigators, trial coordinators and monitors.</li> <li>• Managing documentation, review amendments where no change in the pharmacy process is required.</li> <li>• Handling of patient returned investigational product.</li> <li>• Monitoring visits: Booking visit and making available materials for visit and query resolution.</li> <li>• Updating Standard Operating Procedures</li> <li>• Email correspondence.</li> <li>• Managing financial aspects of trial.</li> </ul>	<p>\$2800 /year</p>
<p><b>Completion</b> – Payable following the close our visit.</p> <ul style="list-style-type: none"> <li>• Completion of drug accountability logs / IWRS drug accountability final reconciliation</li> <li>• Archiving of records</li> <li>• Final monitoring meetings</li> </ul>	<p>\$800</p>
<p><b>Dispensing</b></p>	
<p>IMP dispensing (simple)</p>	<p>\$150 /first kit/item/ /patient/visit/strength</p>
<p>IMP dispensing (complex) A dispensing episode which requires additional time when compared to a simple dispensing. This may include but is not limited to:</p> <ul style="list-style-type: none"> <li>• Additional tasks are required such as using both trial logs and narcotic registers</li> <li>• A trial where pharmacy conducts additional IWRS transaction such as logging data for the randomisation, kit verification or other steps during or after the dispensing process</li> <li>• Study specific requirements e.g. double handling/signing of all logs and prescriptions</li> </ul>	<p>\$200 /first kit/item/ /patient/visit/strength</p>

# Clinical Trial start up at MQ

Information for Sponsors

1 June 2024

Additional recordable drug	\$50 /subsequent kit on the same visit/item
Aseptic reconstitution (simple)	\$350 /preparation (up to 3 vials)
Aseptic reconstitution (complex) <ul style="list-style-type: none"> <li>Multiple manipulations/additional product handling</li> <li>Compounding time ≥ 20 minutes</li> <li>IMP with short shelf life (≤12 hours)</li> </ul>	\$400 /preparation (up to 3 vials)
Additional Aseptic reconstitution	\$80 /each additional vial (>3vials/ preparation, additional charge)
<b>Call back</b> (M-F before 8am&after 4:30pm, Weekends, Public Holidays)	\$1000 for IP dispensing \$2000 for aseptic preparation
<p><b>Storage*</b> Payable at 12-month intervals from arrival of Investigational Product at the Institution. This fee is fixed for the first year and will be prorated for any partial years thereafter. *For bulky trials taking up a large amount of space, this may need to be negotiated at commercial rates. Note: Current commercial rates are \$200 per month for 0.21m<sup>2</sup> + retrieval fees.</p>	
Room temperature	\$1000 /year
Refrigerator/freezer (-20 degree Celsius) storage	\$1200/year
Freezer (-80 degree Celsius) storage	\$2000 /year
Cytotoxic storage (room or fridge)	\$1200/year
<b>Destruction/Reconciliation</b> For used/unused IMPs or retained packaging destroyed on-site	\$160 /occasion
<b>Administrative fee incurred for the return of IMP</b> When pharmacists need to organise the courier and process paperwork on behalf of the CRA	\$160 /occasion
<b>Destruction of Shipping containers</b> For on-site destruction of shipping containers left behind	\$35 /occasion
<b>Storage of returned Stock</b> (kept for periods beyond 3 months) When patient returns are kept for periods beyond 3 months awaiting a monitor's visit or for a shorter period where the trial packaging takes up a large amount of space and the returns process requires pharmacy involvement.	\$350 /year
<b>Pharmacist training</b> For undertaking IMP-specific training due to protocol/pharmacy manual amendment	\$160 / occasion
<b>Remote Monitoring</b> To cover the time that pharmacist is engaged to the remote call and pre and post monitoring tasks including scanning the paperwork and sending electronic documents to CRA	\$200 /hour
<b>Relabelling</b>	\$160 / hour (minimum \$160)

# Clinical Trial start up at MQ

Information for Sponsors

1 June 2024

When pharmacists need to re-label the IMPs with new sponsor-provided labels (e.g. with updated retest date or other changes)	
<b>Miscellaneous Pharmacy Services</b> For undertaking any additional activities not described in pharmacy manual requested by the sponsor	\$160 / hour
<b>Drug costs</b> 20% handling fee for any drugs required to be bought by the pharmacy for the study. Patients should not be out of pocket for their participation in clinical trials. Where a trial involves using drugs reimbursed under the PBS the sponsor will be required to pay the co-payment which is current for that year and this will increase as dictated by the PBS each calendar year.	
<b>Drug transfers</b> Includes but not limited to: <ul style="list-style-type: none"> <li>• Transfer of study drug/shipment to external compounding facility via external courier vendor</li> <li>• Transfer of study drug to another site (at discretion of PI and/or sponsor)</li> <li>• Direct to patient transfers</li> </ul>	\$100 handling fee /event plus transport costs*  <i>*Commercial rates apply</i>
<p><i>Macquarie University hospital Pharmacy can bill the pharmaceutical company directly for the fees and charges associated with establishing and managing clinical trials.</i></p> <p><i>Additional fees may apply to clinical trials that require complex compounding or extra administration. This pricing will be advised at the trial setup as it will depend on the complexity of compounding/administration.</i></p> <p><i>Invoicing for trials is automated from the pharmacy accounts system. <b>No third-party account systems</b>, such as Greenphire, <b>can be utilised for billing</b>. Invoices will be generated monthly or quarterly and emailed to the appropriate email address for payment.</i></p> <p><i>The pharmacy fees are adopted from “Determination of standard costs associated with conducting clinical trails in Australia: Standard List of Clinical Trial Items”, which was released by independent Hospital Pricing Authority in June 2015 under subsection 131(1) of the National Health Reform Act 2011 (Commonwealth). The development of the standard costs was funded by Department of Health and revised by the National Health and Medical Research Council (NHMRC). The costs were based on principles of cost-recovery of services provided by clinical trials pharmacy staff. The costs in June 2015 determination relate to the 2014-15 financial year. The annual EBA and CPI adjustments and benchmarking have been applied since.</i></p> <p><u><i>If a clinical trial continues beyond the period of 2 years, fees may need to be re-negotiated.</i></u></p>	



**MACQUARIE**  
University



*Macquarie University is a vibrant hub of intellectual thinkers, all working towards a brighter future for our communities and our planet.*

#### **A PLACE OF INSPIRATION**

Macquarie is uniquely located in the heart of Australia's largest high-tech precinct, a thriving locale which is predicted to double in size in the next 20 years to become the fourth largest CBD in Australia.

Our campus spans 126 hectares, with open green space that gives our community the freedom to think and grow. We are home to fantastic facilities with excellent transport links to the city and suburbs, supported by an on-campus train station.

#### **RENOWNED FOR EXCELLENCE**

We are ranked among the top two per cent of universities in the world, and with a 5-star QS rating, we are renowned for producing graduates that are among the most sought after professionals in the world.

#### **A PROUD TRADITION OF DISCOVERY**

Our enviable research efforts are brought to life by renowned researchers whose audacious solutions to issues of global significance are benefiting the world we live in.

#### **BUILDING SUCCESSFUL GRADUATES**

Our pioneering approach to teaching and learning is built around a connected learning community: our students are considered partners and co-creators in their learning experience.

#### **FIND OUT MORE**

Macquarie University NSW 2109 Australia  
T: +61 (2) 9850 7111  
[mq.edu.au](http://mq.edu.au)

ABN 90 952 801 237  
CRICOS Provider 00002J