

Camp Aspire

Year 11 & 12 Residential Camp
14 to 16 January 2025 - Information Booklet





Introduction to Walanga Muru

Walanga Muru means 'follow your path' in the language of the local Dharug People.

At Walanga Muru, we seek to engage and guide students to choose their own right path to take, to navigate the obstacles and tangles of life, and to emerge as strong, resilient leaders. The vision of Walanga Muru is to grow our future Aboriginal and Torres Strait Islander leaders in their chosen fields and to build the educational aspirations of our youth.

Why choose Macquarie?

SOME FAST FACTS



APPROXIMATELY 400
Aboriginal and Torres
Strait Islander students



**ABORIGINAL &
TORRES STRAIT
ISLANDER STUDENTS**
come from all states and
territories in Australia



OUR CAMPUS
has clean and green
grounds, spanning
126 hectares



**LOCATED ONLY
15 KILOMETRES**
from Sydney CBD



A CULTURALLY SAFE
office to engage and assist
Aboriginal and Torres
Strait Islander students



MORE THAN 300
companies on campus or
in the Macquarie Park
high-tech precinct



MORE THAN 10,000
degrees awarded annually



THE ONLY
university in Australia to
have a private hospital on
campus

Connect. Empower. Succeed.



What is this camp all about?

Camp Aspire will enable you to experience an area of our university, an area that you choose based on your interests. By attending this camp you will gain the knowledge and experiences that will allow you to make a decision on what your tertiary study options are once you finish high school.

The first 2 days of the camp involves engaging in activities run by Macquarie University faculties to allow you a taste of the degree areas they have to offer.

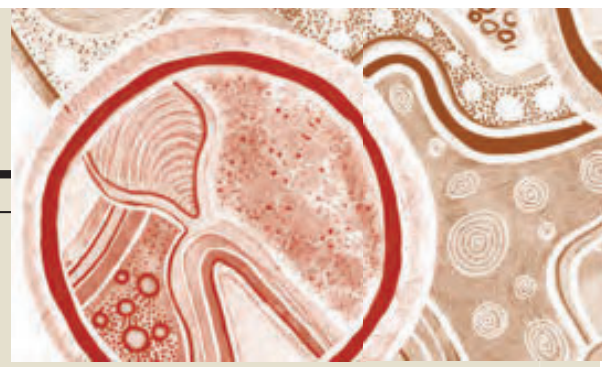
Day 3 will be activities led by our office, Walanga Muru, and will focus on available opportunities at our university, our pathways into university, scholarships, accommodation options, a chance to speak to external stakeholders about job opportunities as well as Cultural activities.

This camp enables you to choose which faculty you are interested in; you will find all the information required to make your decision within this booklet.

You will be asked to select your first and second choice of 'faculty stream' on the online application.



Camp Details



WHAT: This is an all-inclusive 3-day residential camp to explore tertiary options at Macquarie University. You will get a taste of our campus and meet other deadly people.

Over the 3 days, you will experience activities that allow you to get a taste of what your dream degree involves, meet external organisation representatives and get involved in Cultural activities. Students will be supervised by Walanga Muru staff throughout the entire duration of the camp, with night staff staying with the campers at Dunmore Lang College (on MQU's campus) both nights.

WHO: Aboriginal and Torres Strait Islander students in Year 11 and 12 in 2025

WHEN: Tuesday 14th to Thursday 16th January, 2025
(Please note; if you are traveling to camp from more than 3 hours away and Walanga Muru has booked your travel, you may be required to arrive on Monday 13th January 2025).

WHERE: Majority of the activities will be on Macquarie University, Wallumattagal Campus, North Ryde, Sydney, NSW.

HOW: To apply please head to: https://it-mqu.formstack.com/forms/campaspire_2025

Please make sure you really express your interest to attend and passion behind your chosen faculty stream to secure your place. Places are limited, the best applications will be selected.

COST: No cost to campers -all accommodation, food and transport will be organised and supplied.



Camp Timeline

Applications Open	Monday 6th May
Applications close	Sunday 17 November
Successful applicants notified	Friday 22 November
Deadline to accept attendance	Sunday 1 December
Travel details are finalised and cannot be changed	Wednesday 18 December
Receive a full itinerary and additional information	Monday 8 January
CAMP BEGINS	TUESDAY 14 January



Choosing your Faculty Stream

What path would you like to follow?

This camp enables you to choose the stream of activities that you will experience for 2 days of the camp. It is all about you discovering your future opportunities, exploring career options and making deadly friends in the process.

You will gain knowledge in your chosen area of interest and get a taste of what a university degree is all about.

On the online application you will be asked for your first preference and your second preference.

For the camp, we have separated the faculty streams into 4 options which are explained in detail in this booklet.

Please note: Spaces are limited and you may not get your 1st preference.

For more information on all degrees at Macquarie University head to <https://www.mq.edu.au/study/find-a-course>

FACULTY STREAMS

- 1. Macquarie Business School**
- 2. Faculty of Arts**
- 3. Faculty of Medicine, Health and Human Sciences**
- 4. Faculty of Science & Engineering**





1. Macquarie Business School

BE INSPIRED, OUR COURSES YOUR WAY

Do you want to own your own business or work within the corporate world?

Are you an independent thinker and have a passion to improve the lives of communities locally and worldwide?

Our interdisciplinary approach gives you the chance to combine courses and get more hands-on experience. We offer flexibility, so you can choose to generalise or specialise in an area that interests you – whether it be business, economics, commerce, accounting, finance, actuarial studies, business analytics, marketing, management, entrepreneurship or human resources.

A degree within this faculty can help you gain insightful knowledge to make a positive impact within our ever-changing society. A degree within this faculty would allow you to get the chance to undertake ground-breaking research, visionary analysis and leadership through meetings, conferences, publications and events.

DEGREE AREAS WITHIN THIS FACULTY:

- Marketing
- Management
- International Business
- Accounting
- Business Administration
- Commerce
- Economics
- Finance
- Actuarial Studies
- Business Analytics

CAREER OPTIONS:

Actuary, fund manager, risk analyst, superannuation consultant, corporate finance officer, stockbroker, investment advisor, business owner, sales manager, marketing consultant, business intelligence analyst, customer insights manager, social media manager, auditor, accountant, policy planner, economist, international marketer, global business analyst, brand manager, media and public relations specialist

TYPES OF ACTIVITIES YOU WILL EXPERIENCE AT THE CAMP:

- Experience a virtual factory
- Learn how to negotiate
- Explore stock trading
- See if you are a risk taker
- Explore ideas to make a social change
- Teamwork and innovation in accounting
- Learn how to bargain like an economist



For more on this faculty head to:

<https://www.mq.edu.au/study/find-a-course/business/>

Please note the above activities are subject to change.

2. Faculty of Arts

TRANSFORM YOURSELF AND THE WORLD AROUND YOU

As one of the leading arts and humanities faculties in Australia, Macquarie's Faculty of Arts is home to bold thinkers and passionate scholars who are asking the big questions about the world. United in the spirit of interdisciplinary discovery we explore the human story from its earliest foundations in ancient cultures to its exciting future.

The Faculty of Arts consists of 14 departments, 2 university research centres, 4 faculty research centres, 1 museum, and a joint ownership of a community radio station.

DEGREE AREAS WITHIN THIS FACULTY:

- Ancient History
- Indigenous Studies
- Archaeology
- Anthropology
- Geography and Planning
- Indigenous Studies
- Law
- Sociology
- Education
- Music
- Security Studies
- International Studies
- Social Science
- Politics
- Modern History
- Ancient and Modern Languages
- Cultural Studies
- Media and communication

TYPES OF ACTIVITIES YOU WILL EXPERIENCE AT THE CAMP:

- Explore Indigenous Studies
- Modern interpretations of humanity
- Unpack the impacts of environmental change
- Practice law in a moot court
- Digital imaging workshop
- Music workshop
- Creative writing activity
- Experience sociology first hand
- Careers practice-based exercises




CAREER OPTIONS:

Archivist, communications officer, criminologist, historian, human resource manager, journalist, radio producer, advertising executive, digital designer and developer, film or tv producer and writer, social/market researcher, social change activist, intelligence officer, barrister or solicitor, financial legal advisor, public policy advisor, diplomatic servant, legal officer, multimedia specialist, lobbyist, entrepreneur.

For more on this faculty head to...

<https://www.mq.edu.au/about/about-the-university/faculties-and-departments/faculty-of-arts>

Please note the above activities are subject to change.



3. Faculty of Medicine, Health & Human Sciences

INSPIRE. ENGAGE. TRANSFORM

Research in the Faculty of Medicine, Health and Human Sciences spans the biomedical and clinical sciences, cognitive and brain sciences, health systems and health informatics, linguistics, physiotherapy, psychology and public health.

Areas of research excellence include neuroscience, innovations in healthcare systems, emotional health, expertise, multilingualism, language acquisition in children, reading, and speech and hearing.

In putting our students first, we provide an inspirational education experience informed by research that transforms understanding and changes lives.

DEGREE AREAS WITHIN THIS FACULTY:

- Linguistics
- Medicine and health sciences
- Psychology and cognitive science
- Speech and hearing

TYPES OF ACTIVITIES YOU WILL EXPERIENCE AT THE CAMP:

- Explore the how the brain works with Lego
- Understand communication in science
- Understand how we learn and how memory works in teaching
- Explore human behaviour and psychology

CAREER OPTIONS:

Community care manager, community development worker, community health and social advocate, health and social researcher, international aid and development worker, forensic speech scientist. After further postgraduate study, psychologist, audiologist, speech pathologist.



For more on this faculty head to...
<https://www.mq.edu.au/about/about-the-university/our-faculties/medicine-and-health-sciences>

Please note the above activities are subject to change.

4. Faculty of Science, Engineering

BE AUDACIOUS AND BRAVE;
DON'T BE AFRAID TO TACKLE BIG ISSUES

In a world more dependent on science and engineering than ever before, we stand at the forefront of change and innovation.

Our degrees address the big issues faced by society both nationally and internationally – the changing environment, future materials and fuels, biotechnology, cyber security, just to name a few. The pairing of engineering and science in a single faculty means many of our research discoveries in science see direct technological applications in engineering.

DEGREE AREAS WITHIN THIS FACULTY:

- Biodiversity and Conservation
- Digital Business
- Marine science and biological sciences
- Engineering
- Chiropractic
- Earth and planetary sciences
- Medical sciences
- Cyber security
- Mathematical Sciences
- Marine Science
- Environment
- Information technology

TYPES OF ACTIVITIES YOU WILL EXPERIENCE AT THE CAMP:

- Experience a working hospital on campus
- Visit inside science laboratories and science experiments
- Hear stories from current students

For more on these faculties head to:
<https://www.mq.edu.au/faculty-of-science-and-engineering>

Please note the above activities are subject to change.

CAREER OPTIONS:

Aerospace engineer, electrical and electronics designer, automotive engineer, mechanical engineer, water engineer, robotics designer and programmer, app developer, software engineer, web designer, environmental consultant, wildlife manager, bio-pro prospector, conservation policymaker, environmental consultant, environmental scientist, aquaculture and mariculture specialist, exploration geologist, chiropractor, sports injury specialist, forensic scientist, pharmacologist, medical researcher





Information for campers, schools, parents & caregivers

TRANSPORT: *Please indicate your mode of transport on the online application form.*

- If students are traveling to the camp by public transport, the Macquarie University campus is easily accessible, with our university having its own Metro train station and bus stops throughout and nearby campus.

- If traveling more than 3 hours surface travel from students' home to the campus, Walanga Muru will also cover the cost of travel (flight or long distance train).

- If Walanga Muru is booking your travel, we will book it based on the information you've provided. A staff member will meet students at Sydney airport (if flying) and Central station (if long distance train) and escort students to the university. The same will occur for return travel once the camp concludes on 16th January.

RULES OF ATTENDING:

- 1) Macquarie University is a learning institution. Students entering are requested to respect the rights of the university students, staff, and property.
- 2) **This is a smoke free event. Students will not be permitted to take smoke breaks for the duration of the camp.**
- 3) **This event is also drug and alcohol free. Any student found to have drugs or alcohol will be sent home immediately.**
- 4) There will be no free time allocated, students are to always stick to the schedule.
- 5) Any instances of discrimination, bullying or racism will not be tolerated. Any student found to be participating in this will be sent home immediately.

CAMP SUPERVISION:

All activities will be supervised by Walanga Muru staff and Macquarie University staff. Walanga Muru night staff will also be staying at the accommodation in case of any student emergencies.

MEDICATION:

Please note: When a medical practitioner has prescribed medication (including emergency medication) that will need to be administered during the Camp, or where a student has a medically diagnosed condition or allergy, parents are responsible for:

1. Bringing this need to the attention of the Macquarie University staff (relevant section on Camp application form and email correspondence).
2. Ensuring that the information is updated to Walanga Muru if it changes.
3. Supplying the medication and any 'consumables' necessary for its administration in a timely way, in original packaging with the student's name and administering instructions clearly labelled.
4. The medication should be well within its expiry date.

IN CASE OF EMERGENCY:

In case of an accident or illness that requires emergency treatment, staff will utilise the appropriate emergency service. Every effort will be made to contact parents/guardians, who are listed as authorised nominees on the application form, to notify them of the situation. The approved provider, nominated supervisor or facilitators will seek/provide urgent medical, dental, hospital treatment or ambulance service, including transportation by ambulance (accompanied by a Macquarie University staff member or external facilitator), for the camp attendee if this should be considered necessary, and the parent/guardian will accept any responsibility for the cost incurred.

USE OF CONTACT DETAILS:

Contact details prior to camp:

Office phone numbers: 9850 8624 OR 9850 6794.

Email: wmpathways@mq.edu.au

Contact details during the camp:

The contact details provided in your child's application will only be used in case of emergency or consent to administer medication such as Panadol.

Contact details for parents and/or caregivers to use include the below mobile number, as well as the email above.

Pathway's mobile number: For use *during* the camp 0493 818 774.

How to apply

FOLLOW THE STEPS BELOW

Scan the QR
Code for online
application



- STEP 1:** Read the information in this brochure thoroughly; share the information with your teachers and your parent/caregiver.
- STEP 2:** Fill out the online application outlining your desire to attend and the passion towards your chosen field at https://it-mqu.formstack.com/forms/campaspire_2025 by Sunday 17th November 2024.
- STEP 3:** Wait to hear if your application has been successful by Friday 22nd November 2024.
- STEP 4:** Make sure you are prepared, know what to pack, know how you are getting to and from the camp and know where to meet etc.
- STEP 5:** After hearing your application is successful, keep an eye on your emails and text messages for updates from Walanga Muru.
- STEP 6:** Come along to the meeting place at 10:00am on Tuesday 14th January 2025 to have a deadly time!



Any Questions?

GET IN TOUCH

Email: wmpathways@mq.edu.au
Phone: (02) 9850 8624 OR 9850 6794

Website: mq.edu.au/walanga-muru
Facebook: www.facebook.com/walangamuru
Instagram: [@walanga_muru_mq](https://www.instagram.com/walanga_muru_mq)