



# CanEngage

## Symposium welcome

**Professor Johanna Westbrook**

AUSTRALIAN INSTITUTE  
OF HEALTH INNOVATION



**MACQUARIE**  
University  
SYDNEY · AUSTRALIA



**MACQUARIE**  
University



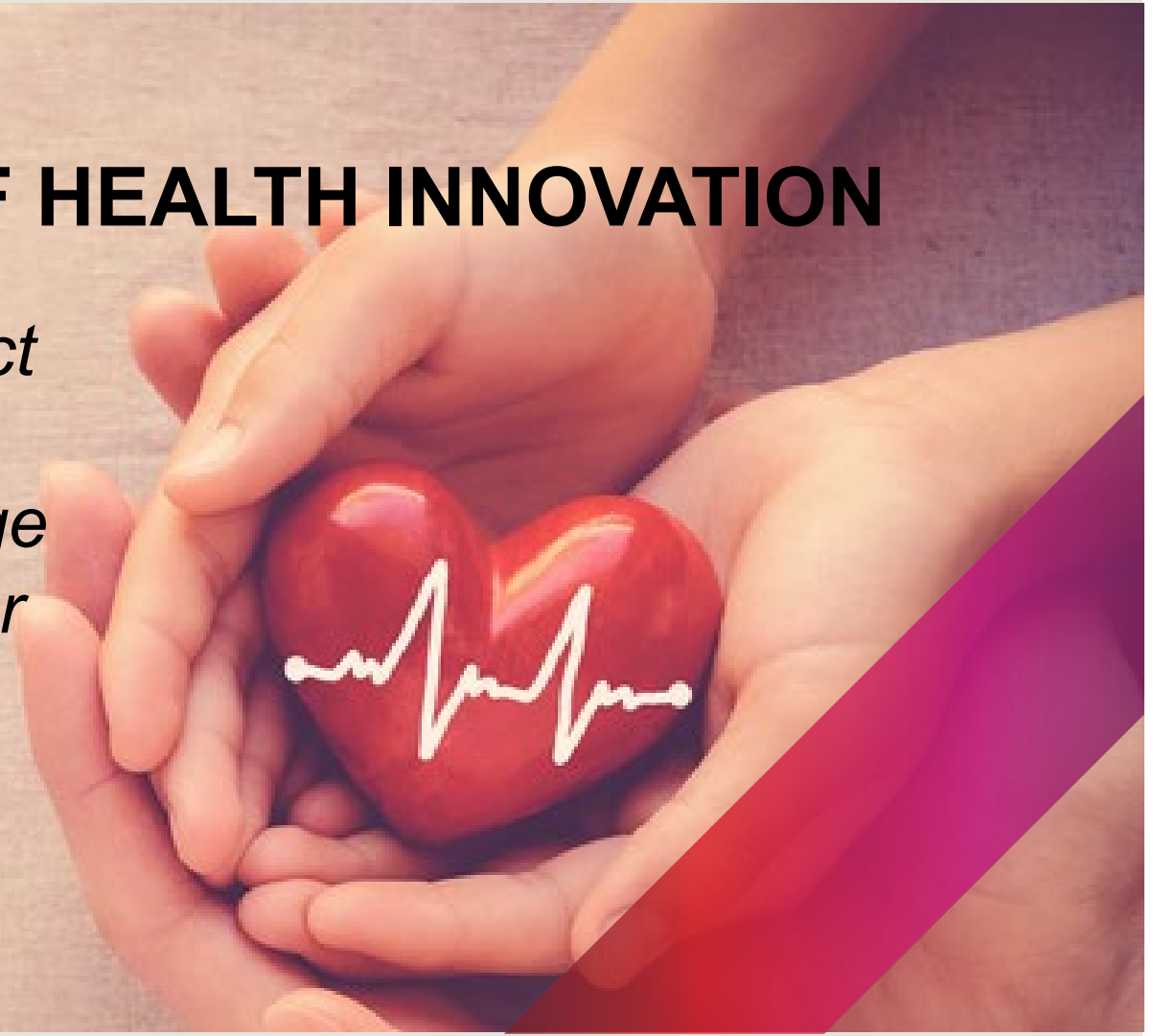
**Australian Institute of Health Innovation**



# AUSTRALIAN INSTITUTE OF HEALTH INNOVATION

*Our goal is to co-create high-impact health services and systems research that drives positive change in policy, practice and behaviour for the benefit of all.*

[aihi.mq.edu.au](http://aihi.mq.edu.au)



# Australian Institute of Health Innovation



AIHI

AUSTRALIAN INSTITUTE  
OF HEALTH INNOVATION



Professor  
**Jeffrey  
Braithwaite**

Founding Director,  
AIHI

Director, Centre for  
Healthcare  
Resilience and  
Implementation  
Science



Professor  
**Johanna  
Westbrook**

Director, Centre for  
Health Systems  
and Safety  
Research



Professor  
**Enrico  
Coiera**

Director, Centre for  
Health Informatics



Professor  
**Henry  
Cutler**

Director, Macquarie  
University Centre  
for the Health  
Economy

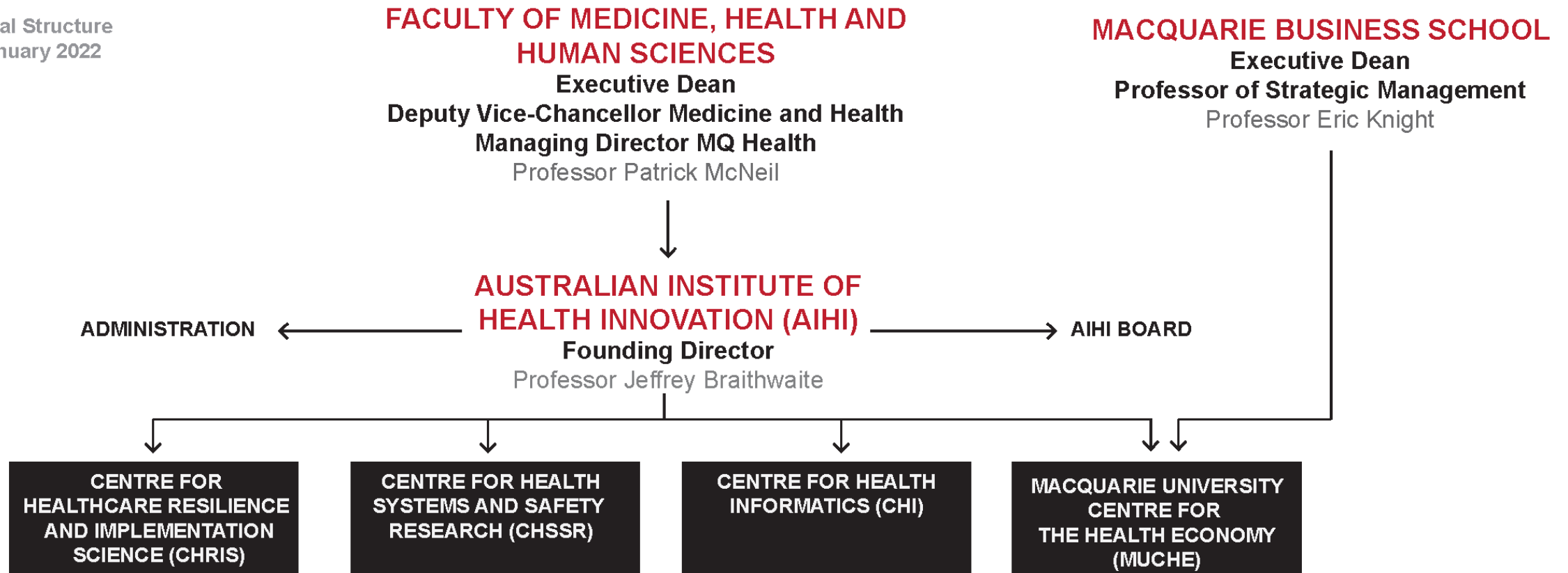
NHMRC Partnership  
Centre for Health  
System Sustainability

NHMRC Centre of  
Research Excellence  
in Implementation  
Science in Oncology

NHMRC Centre of  
Research Excellence  
in Digital Health

# Our structure

Organisational Structure  
as of 01 January 2022



CENTRE FOR HEALTHCARE RESILIENCE AND IMPLEMENTATION SCIENCE (CHRIS)	CENTRE FOR HEALTH SYSTEMS AND SAFETY RESEARCH (CHSSR)	CENTRE FOR HEALTH INFORMATICS (CHI)	CENTRE FOR THE HEALTH ECONOMY (MUCHE)
Professor Jeffrey Braithwaite	Professor Johanna Westbrook	Professor Enrico Coiera	Professor Henry Cutler
<ul style="list-style-type: none"> <li>• Appropriateness of Care and Patient Safety</li> <li>• Complex Systems and Implementation Science</li> <li>• Health and Societal Outcomes</li> <li>• Human Factors and Resilience</li> <li>• International Healthcare Reform</li> <li>• Learning Health Systems</li> </ul>	<ul style="list-style-type: none"> <li>• Aged Care Evaluation and Research</li> <li>• Diagnostic Informatics</li> <li>• Health Analytics and Patient Safety</li> <li>• Healthcare Engagement and Workplace Behaviour</li> <li>• Medication Safety and Electronic Decision Support</li> </ul>	<ul style="list-style-type: none"> <li>• Climate Change and Digital Health</li> <li>• Consumer Informatics</li> <li>• AI Systems Safety</li> <li>• Precision Health and Smart Sensing</li> <li>• Translational AI for Healthcare</li> </ul>	<ul style="list-style-type: none"> <li>• Aged Care</li> <li>• Health Technology Assessment</li> <li>• Integrated Care</li> <li>• Mental Health</li> </ul>

NHMRC PARTNERSHIP CENTRE FOR HEALTH SYSTEM SUSTAINABILITY

NHMRC CENTRE OF RESEARCH EXCELLENCE IN DIGITAL HEALTH

NHMRC CENTRE OF RESEARCH EXCELLENCE IN IMPLEMENTATION SCIENCE IN ONCOLOGY

# AIHI snapshot

FIGURES FOR 2022



**\$49.8 million**

Enterprise value of projects under  
AIHI management



**\$79.6 million**

Enterprise value of key projects  
administered elsewhere



**129**

Number of research projects under  
AIHI management



**312**

Number of peer-reviewed outputs

# Centre for Health Systems and Safety Research (CHSSR)



AUSTRALIAN INSTITUTE  
OF HEALTH INNOVATION







CanEngage

**Together we strive for safer care**

12 September 2023

AUSTRALIAN INSTITUTE  
OF HEALTH INNOVATION

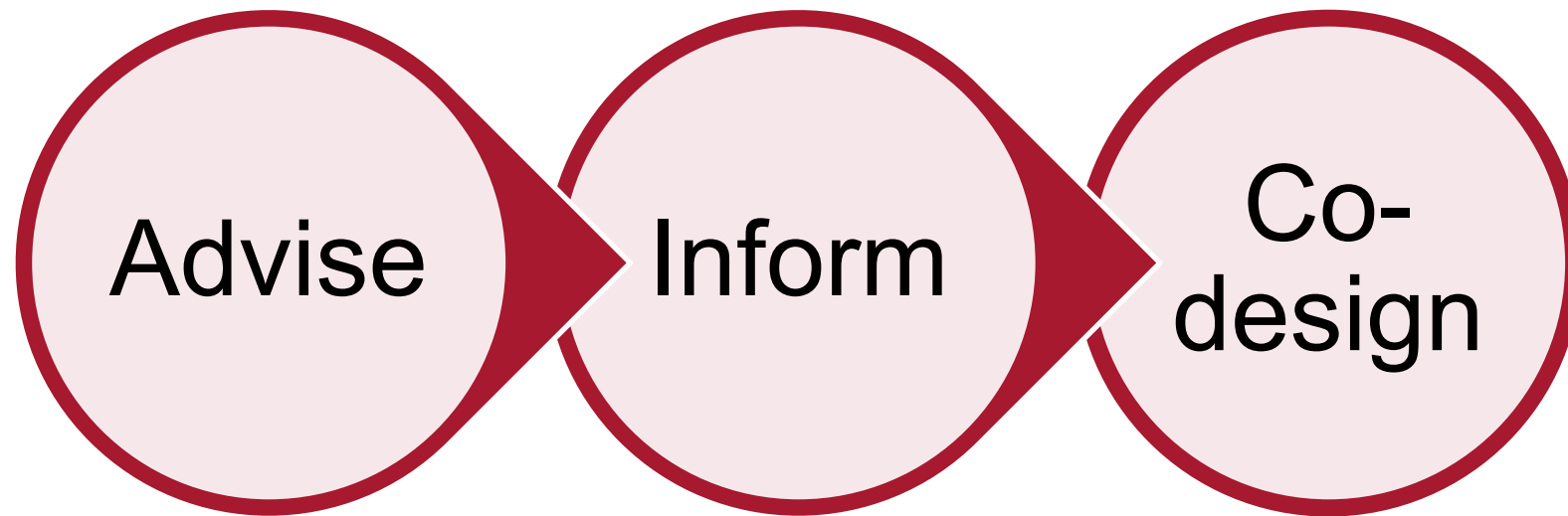


**MACQUARIE**  
University  
SYDNEY · AUSTRALIA



## AIHI Consumer Panel

Find out more about our AIHI Consumer Panel: email [aihi@mq.edu.au](mailto:aihi@mq.edu.au)





## Join us for a PhD

